



BEAUFORT

COUNTY SCHOOL DISTRICT

Community Report Card



2018

Beaufort County's public schools continue to make dramatic progress, with across-the-board improvements in student achievement and significant savings from more efficient operations.

District schools, students and teachers have earned numerous state and national honors in both academics and athletics.

The district has created "schools of choice" in all buildings, meaning that parents can apply to send their children to other schools in the district, regardless of where they live. In addition, our Connect2Learn program has put a mobile computer in the hands of every student in grades K-12.

This report provides highlights of some of the district's key academic improvements and snapshots of how taxpayer dollars are being saved through more efficient business operations.



Our Academic Improvements

On-Time Graduation Rate



The percentage of the district's high school seniors graduating "on time" in four years improved for a seventh consecutive year, from 83.4 percent in 2016 to **84.1 percent** in 2017. That represents a dramatic improvement from 75.3 percent five years ago.

Advanced Placement Exams



Fifty-four percent of high school students taking Advanced Placement courses **scored high enough to qualify for college credit** in 2017, a significant improvement from 48 percent five years ago.

AdvancED



The district has earned a renewal of its national accreditation from AdvancED, a nonprofit organization that reviews school systems around the world. The AdvancED review places **BCSD in the Top 10 among South Carolina schools** and the **Top 10 in the AdvancED network**, which includes international rankings. In addition, AdvancED awarded specialized STEM certification to all six district schools that applied, giving the district a perfect "approval rating."

Athletes' Academic Performance



For the 2016-17 academic year, **98 percent** of high school and middle school student athletes maintained their academic eligibility to participate in interscholastic sports under the district's 2.0 minimum grade point average requirement. The average **GPA district-wide for middle school athletes was 3.69**. For **high school athletes**, it was **3.86**.

College Scholarship Totals



Our New Scholarship



The Building a Better Beaufort Scholarship (B³)

pays up to two years of tuition costs at the Technical College of the Lowcountry for qualified local high school graduates. B³ is a partnership among the district, TCL and Know2 Beaufort County.

WorkKeys Exams

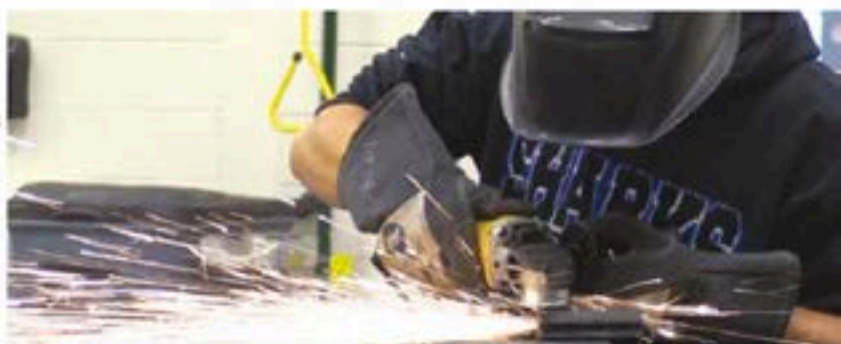
85%

Eighty-five percent of **11th-graders scored high enough** on the first statewide administration of the WorkKeys exam to qualify for certificates that they can use to apply for jobs anywhere in the nation. BCSD students outperformed their peers from most other districts.

Our Growing District

CATE Expansion

We are expanding Career and Technology Education (CATE) courses designed to prepare students for high-paying jobs and industry certifications in rapidly emerging fields. New high-tech facilities are open at **Battery Creek** and **May River** high schools.



Many Instructional Choices



Families can indicate their preference for school assignments based on participation in available instruction options that include **Advanced Math, Engineering and Science Academies (AMES), Montessori, Arts Infusion and Dual-Language Immersion in Spanish or Chinese**. For the 2017-18 school year, more than 2,000 children were approved for enrollment in programs outside their zoned attendance areas.

Expanded Prekindergarten Programs



The district has added 260 full-day prekindergarten slots, which has allowed schools to reduce or even eliminate waiting lists of at-risk children who need focused attention before they start classes. **The district earned the Champions for Children Award from the Institute of Child Success for its efforts to improve early childhood education.**

High-Tech Learning for All Students



The district's Connect2Learn program has put a mobile computer **in the hands of every student** in grades K-12. Students can take their computers home to continue their learning outside of school, giving them access to programs, files and schoolwork.

Increasing Support From Volunteers



Community support for our schools has never been stronger. Even after the district dramatically intensified its security screening process for school volunteers, the **overall number of volunteers increased by 450%** in just the last three years – from 1,300 to more than 7,200.

Building Costs



National Median
\$235
per square foot

May River High
\$154
per square foot

Sources: State of School Construction Report, BCSD

Staffing, Taxes and Cost of Living

The transition of the school bus system from private-sector to district management meant that all bus drivers became district employees in 2016. School-level staffing is based on a standardized formula that responds to increasing enrollment.

- Beaufort County has one of the state's **lowest property tax millage rates** for school operations at 113.5 (FY 2017-18).
- Beaufort County's cost of living is the highest in South Carolina, and costs continue to rise for things that the district cannot control. Those increased expenditures include insurance contracts, employee health care and state-mandated salary increases for teachers.

District Office Staff vs. Total Staff



Energy Use



Water Use

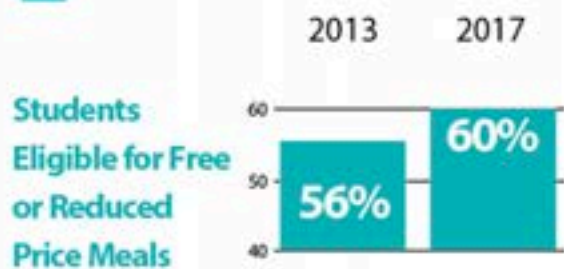
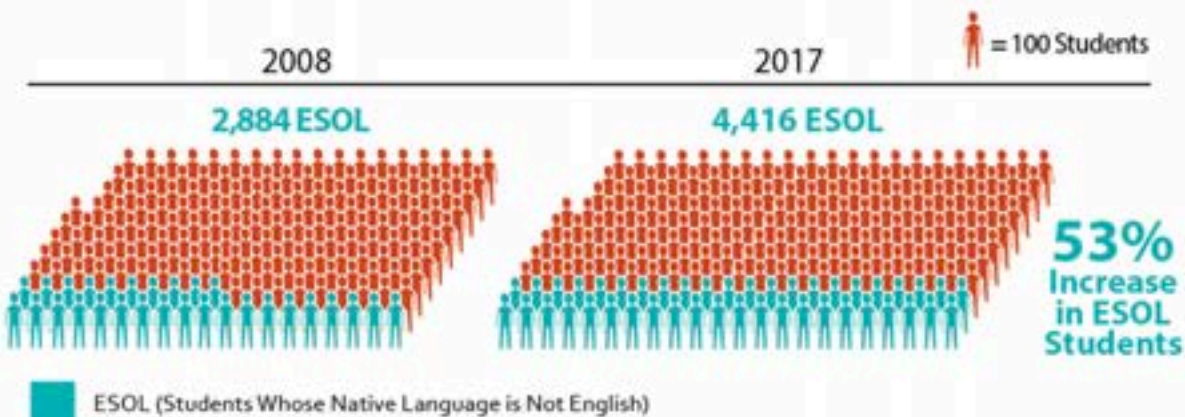
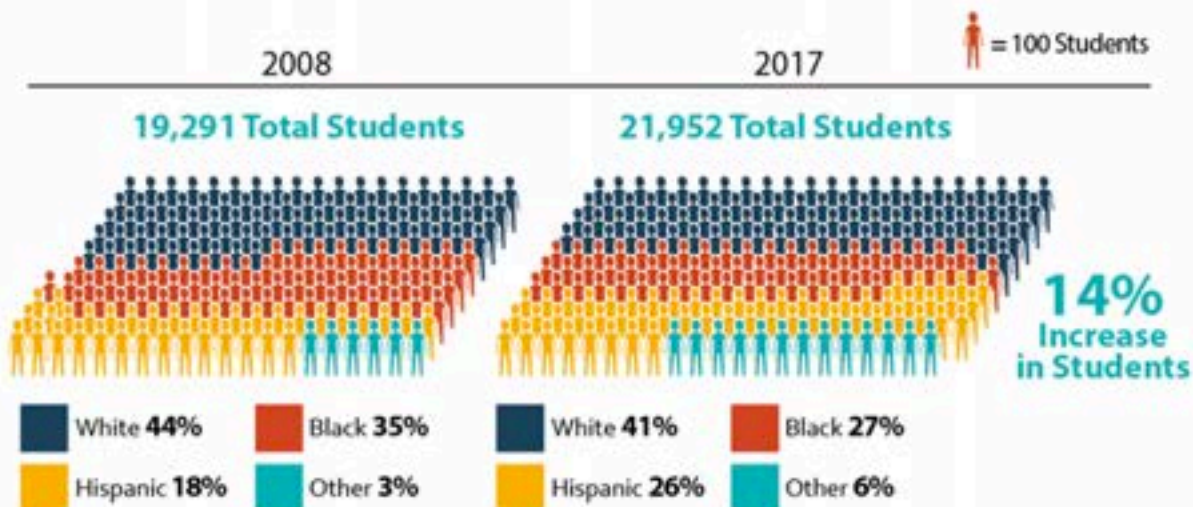


Saving Tax Dollars

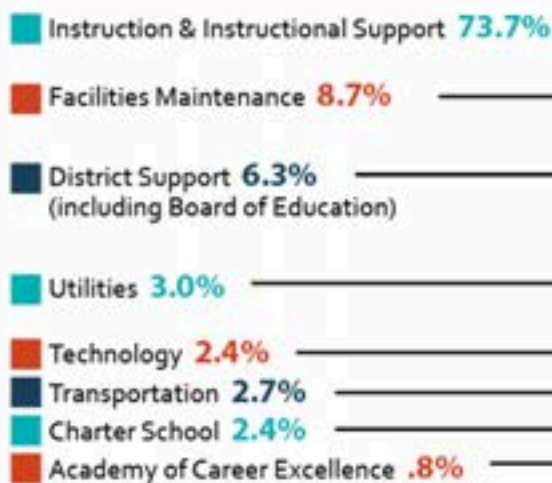
The district's bond rating with Standard and Poor's boasts a positive outlook due to the district's **strong historical financial performance**. Over the past 18 years, the district has never had a negative finding in any of its annual independent audits.

Our Students

2018



Where the Money Goes

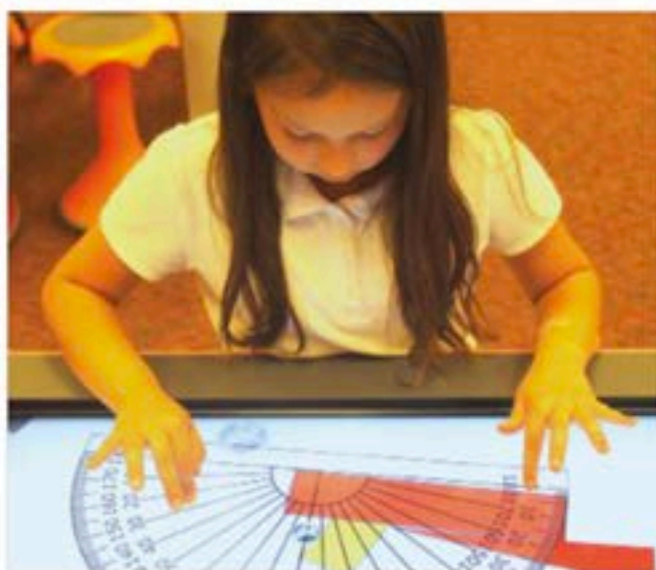


How You Can Help

Schools offer many opportunities for parents, citizens and businesses to take active roles. Mentoring programs allow community volunteers to work one on one with at-risk students. Businesses and professional organizations can build strong relationships with individual schools. Community members are encouraged to share their professional knowledge and life experiences with students.

For information, call (843) 322-2306.

BEAUFORT COUNTY SCHOOL DISTRICT



beaufortschools.net



Central Office

(843) 322-2300
(800) 763-1875 (toll-free)
(843) 322-2371 (fax)

Physical Address

2900 Mink Point Boulevard
Beaufort, SC 29902

Mailing Address

Post Office Drawer 309
Beaufort, SC 29901