



# Community Project Review Committee CPRC 2.0 Meeting 7

February 23, 2023

Welcome – Carol Crutchfield

## Where Learning Leads the Way!

# Agenda – Meeting 7



1. Introductions of Members
2. CPRC 2.0 Scope of Work
3. Riverview Charter Gym
4. Parking lots and Driveways
5. Additional Athletic needs
6. Stadium Expansions
7. Furniture
8. Electric Vehicle Charging stations
9. Review Calendar

*Note:*

*Kitchen improvements have  
been moved to next meeting*

# 1. Introductions



## 2. Scope of Work



The CPRC 2.0 is tasked with developing a list of projects to present to the Board of Education for a 2023 Bond Referendum

### November 2022

- Form a Community Project Review Committee (CPRC 2.0)
- Engage the members prior to starting to meet

### Nov 2022 – March 2023

- CPRC 2.0 meets
- Review facilities information
- Site visits to schools
- Other info/needs to be determined

### April 4, 2023

- CPRC 2.0 reports its to the Superintendent with recommendations at the Board meeting



### Apr–May 2023

- Board reviews the CPRC 2.0 recommendations
- Board develops Referendum list of projects

### May - June 2023

- Board works with Bond council, etc. on final referendum for voters

### July–Nov 2023

- Public education sessions in the community as to what is on the referendum

### 8 Nov 2023

- Public vote on Bond Referendum 2023

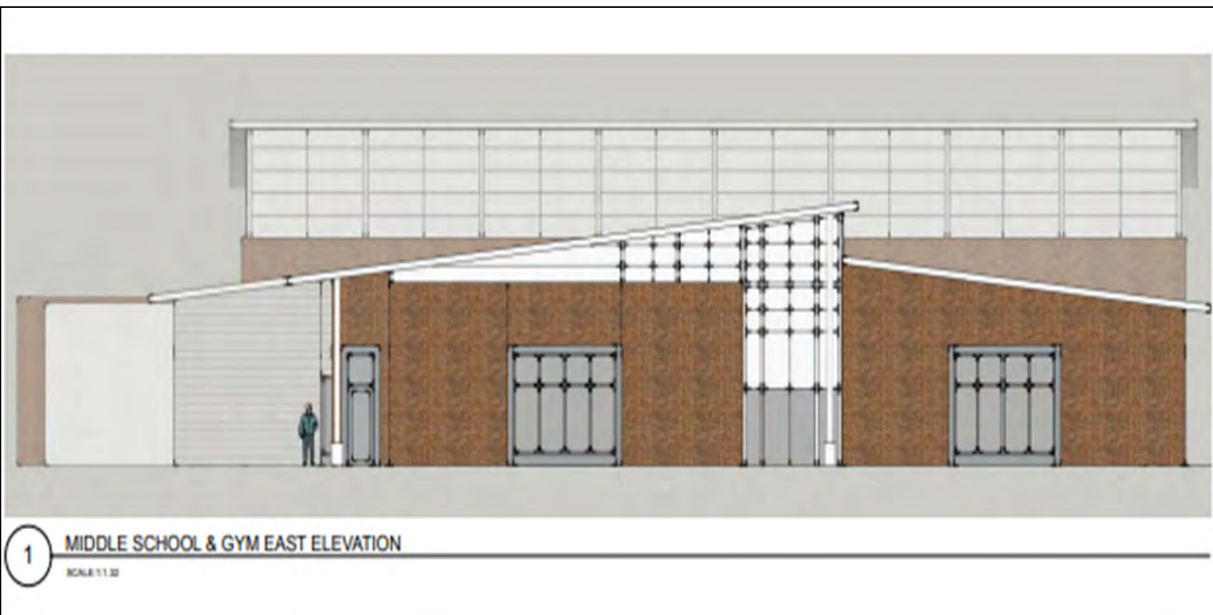
## TOPIC DISCUSSION OUTLINE

Project Topics & Tasks	Completed	6-Feb	23-Feb	6-Mar	23-Mar	3-Apr
Mobile Classrooms				X		
Additional Early Learning Classrooms	X					
Elementary School level seat capacity in Bluffton		X				
Middle School level seat capacity in Bluffton		X				
High School level seat capacity in Bluffton		X				
Additional cafeteria and kitchen space at May River High School		X				
Stadium expansions at multiple high schools			X			
Weight room at Bluffton High School		X				
Land for Future School		X				
Replacement School for Lady's Island Middle School	X					
Career and Technology Education (CTE) facilities at May River High School, Bluffton High School and Beaufort High School				X		
JROTC Facility at May River High School				X		
Renovation/Replacement school for Hilton Head Island High	X					
Parking lots and entrance drives updates			X			
Additional parking lot at May River High School		X				
Riverview Charter School Gym			X			
Technology warehouse and imaging center				X		
Early Childhood Office/Screening Spaces	X			X		
Transportation Shop				X		
Improved Bus Storage lots				X		
Kitchen Improvements at multiple schools				X		
District Education Support Center (DESC) catering kitchen and Right Choices kitchen				X		
Electric Vehicle (EV) Charging Stations at Schools			X			
Furniture			X			
Additional Athletics			X			
Safety/ Security				X		
School Moderniation				X		
finance - funding of referendum					X	
final prioritization					X	
draft a report						X

2/23/2023

### 3. Riverview Charter Gym

*Riverview Charter School Gym:* The Riverview Charter School gym was part of the original \$629M project budget reported by the CPRC to the Board for the 2019 referendum. The Board agreed that the Riverview Charter School gym project would be considered as part of the next referendum package.



#### *Original Scope of Work:*

- Regulation size middle school Gymnasium including bleachers, score board and locker rooms with toilets (no showers)
- Enclosed corridor between gym addition and middle school building to provide a central entrance for arts and athletics events
- Divide the current gym into a performing arts area with fixed seating on the existing stage end and music/choral/band area on the other end
- Add approx. 15 new parking spaces near the gym and performing arts area



# Riverview Charter School Mission Statement

---

“Riverview’s mission is to create a small, diverse learning community that *actively* engages students in meaningful and *innovative* learning experiences. Emphasizing “learning by doing”, family and community *involvement*, and engaged citizenship, Riverview is committed to nurturing the whole child and preparing each student for a global society.”



# Riverview Charter School

## Who are we?

---

Grades K – 8<sup>th</sup>  
20 students/homeroom  
4 Homerooms/Grade

Maximum Enrollment  
**720 students**

Governed by a  
**Board of Directors**  
Composed of Parents &  
Community Members



# Riverview Charter School

## Who are we?

---

Riverview is Beaufort County's  
first & only **locally sponsored**  
Public Charter School

We are a school of choice for  
all Beaufort County residents,  
and **ONLY for Beaufort County residents**

# Relationship to BCSD

---

## ~ ACCOUNTABILITY ~

Charter = Contract

SC Standard Course of Study

SC Standardized Testing

Health, Safety, Civil and Disability Rights

Desegregation Agreement with OCR

Annual Independent Audit

Non-Profit / Freedom of Information Act

Annual Report to SCDE & BCSD

# Relationship to BCSD

---

## ~ AUTONOMY ~

Curriculum & Instruction

Integrated Studies

Spanish, French, Visual Art, Creative Art, Music/Band,  
Movement/Dance, Technology, PE, Athletics

Before & After School Care (Tidewatch)

Student Code of Conduct

Employment Policies

# Referendum Proposal

---

## ~ K-8 Gym~

- Current space designed for K-5
- Maximum capacity of current gym
- Does not allow for school wide assemblies or choral/band/play performances
- Does not allow for home athletic events/practice
  - Riverview has to contract use of BCSD and other facilities
  - No locker room to support student athletes

# Referendum Proposal

---

## ~ Athletic Fields ~

- Riverview has grown athletic offerings to include:
  - Baseball, softball, soccer, golf, sporting clays, basketball, cross country, volleyball
- No practice/home game fields for baseball, softball, or soccer
- Insufficient lighting



1 FIRST FLOOR

SMH

# RIVERVIEW CHARTER SCHOOL NEW ADDITION NEW FLOOR PLAN

PROJECT NO. 100  
DESIGNED BY  
SMH ARCHITECTS  
DATE: 10/10/10



# GENERAL INFORMATION

Name of School	Riverview Charter School
Year School Opened	2009-2010
Charter Renewal Date	2019-2020: 1st Renewal Date 2029-2030: 2nd Renewal Date
Grade Level(s)	K-8
School Address(es)	81 Savannah Hwy, Beaufort, SC 29906
School Website Address	<a href="http://www.RiverviewCharterSchool.org">www.RiverviewCharterSchool.org</a>
Name of School Leader	Robert Bechtold
School Leader's Phone Number	843-379-0123
School Leader's E-mail	<a href="mailto:robert.bechtold@riverviewcharterschool.org">robert.bechtold@riverviewcharterschool.org</a>
Name of Board President	Reece Bertholf
Board President's Phone Number	843-379-0123
Board President's E-mail	<a href="mailto:reece.bertholf@riverviewcharterschool.org">reece.bertholf@riverviewcharterschool.org</a>
Name of Sponsor/Local Education Agency	Beaufort County School District



## 4. Parking Lots and Driveways

- District hired Applied Technology & Management and CHA Consulting to conduct a stormwater and roadway audits/evaluations for 36 school sites during summer of 2013
- Stormwater assessment included: existing conditions of ponds, drop structures, ditches, weirs, rip-rap, rain gardens, bio-retention basins, outfall and inlet structures
- Roadway evaluation included existing condition of roadways, parking areas, and pathways over 6' wide
- Very little of this work has been completed

HHIECC bus sidewalk needs to be extended 100 linear ft.



BLHS rear athletic parking lot needs to be paved



WBMS parking in main lot is cracking potential need for additional lot near cafeteria and art-wing – far right area



These examples at Whale Branch Middle show stormwater drainage issues causing cracking on the sidewalks as well.



2/23/2023

Beaufort County School District ©

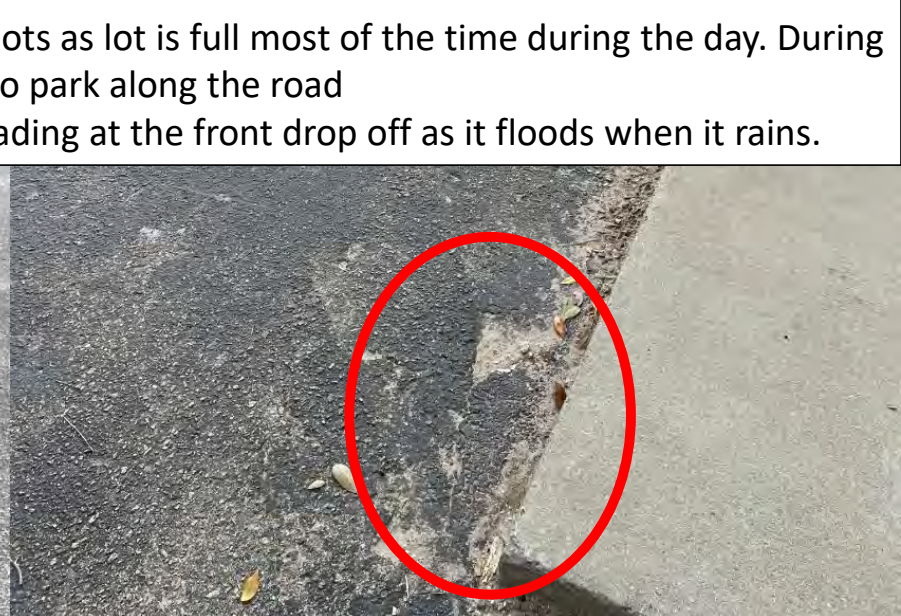
20

These examples at Broad River and Shanklin are indicative of many other school's sidewalks, driveways, and parking lots



**BRES needs:**

- additional parking spots as lot is full most of the time during the day. During events people have to park along the road
- corrections to the grading at the front drop off as it floods when it rains.



JSES needs resurfacing and striping and new curbs. It could use a better more defined entrance especially for foot traffic



JJDECC needs an overhaul of their staff parking lot and the bus loop.



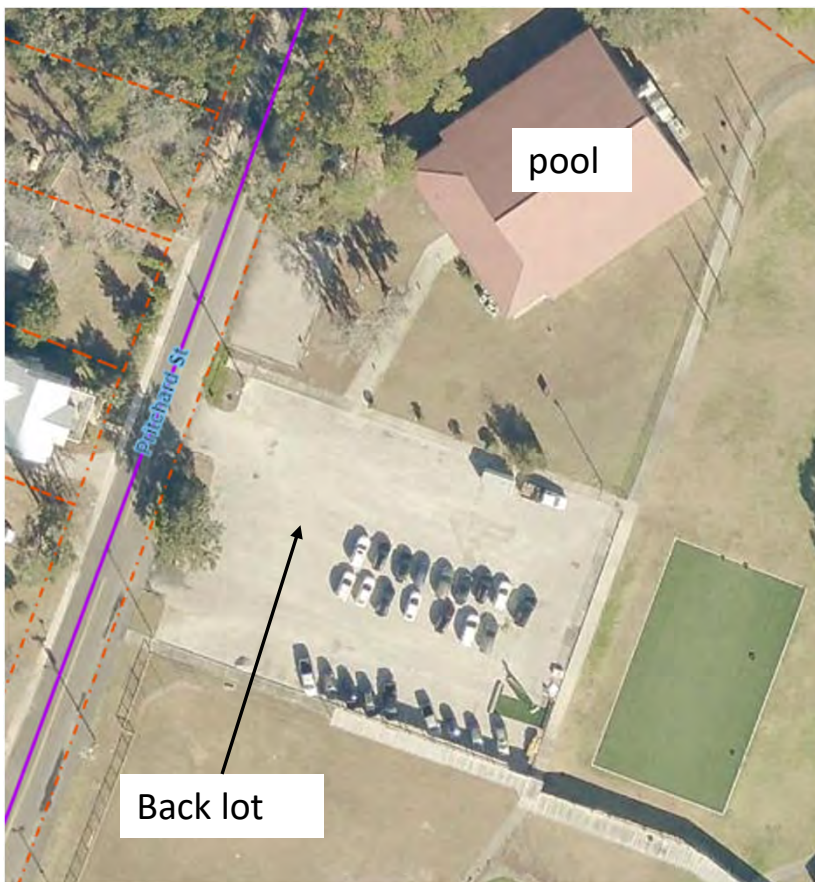
2/23/2023

Beaufort County School District ©

22

MC Riley needs some additional parking. Town of Bluffton is doing some stormwater work in the back lot which might lose a few spaces

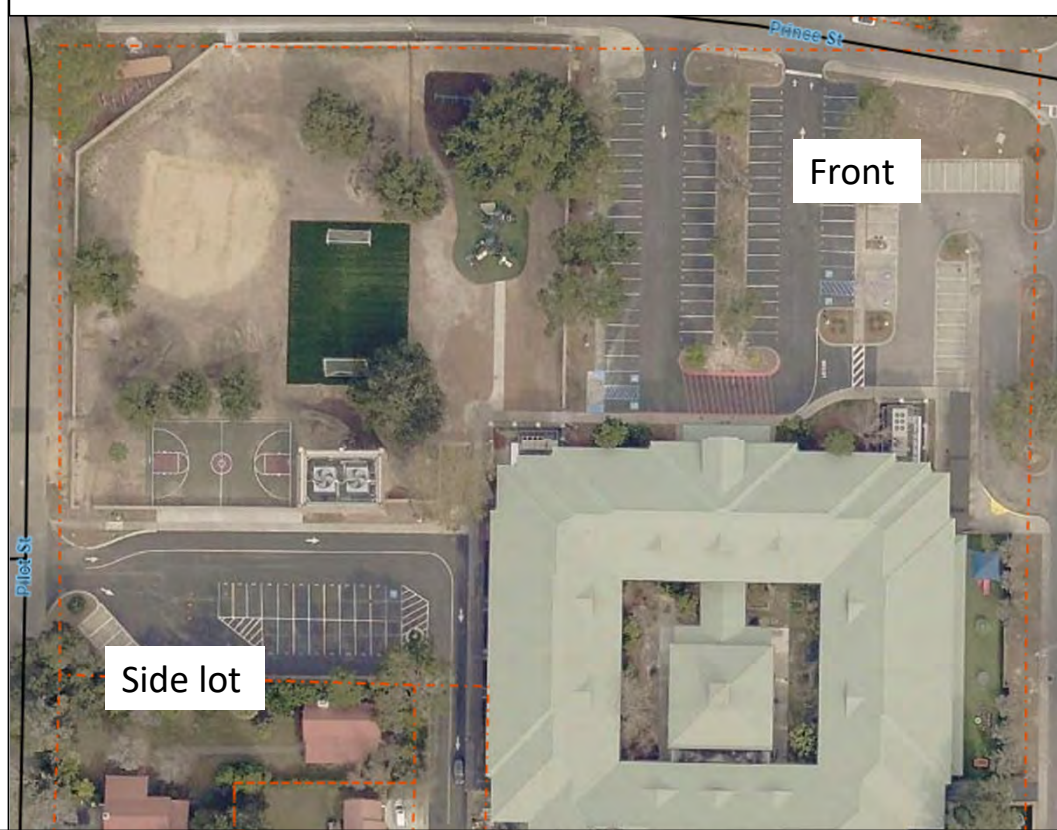
The road between the ES and ECC “floods like crazy” during rain events.



Battery Creek High School needs new parking lots.

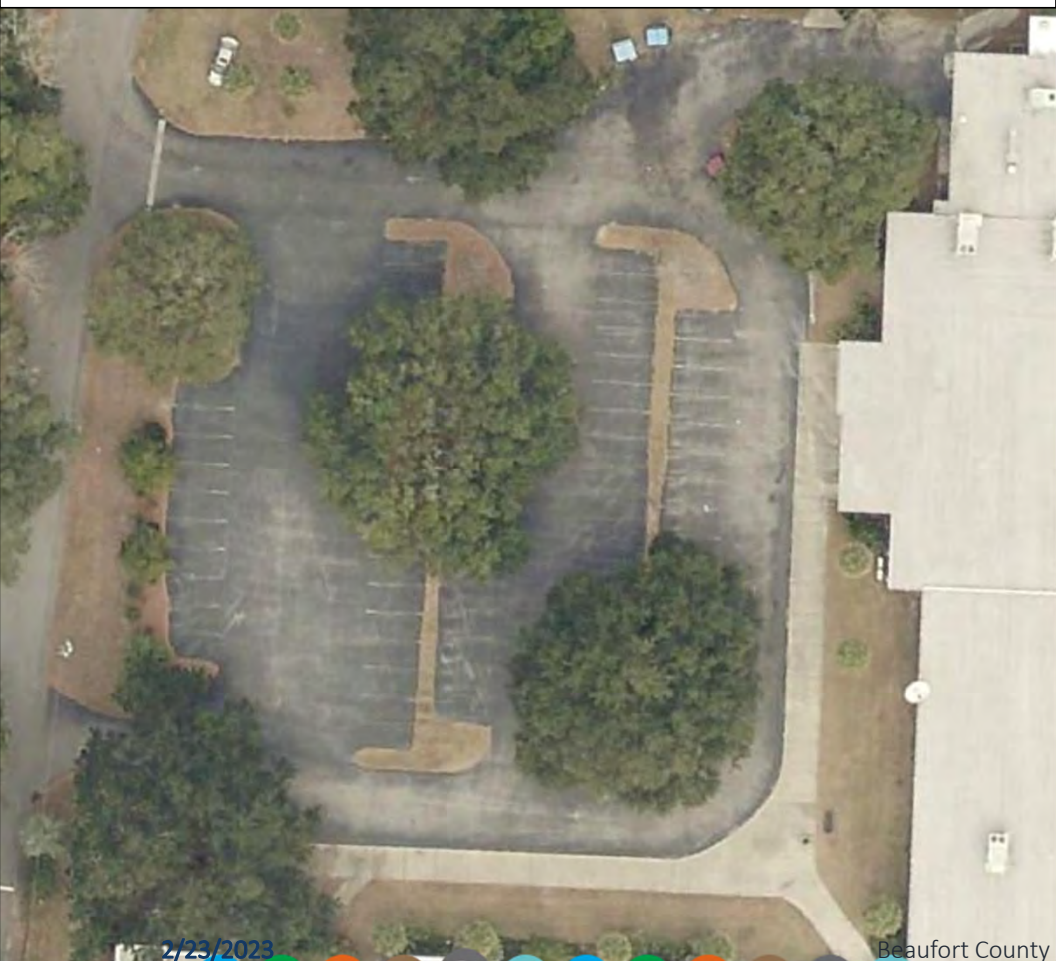


Beaufort Elementary could use fresh pavement in the front lot and the side lot.



*These 2 schools were not assessed in the 2022 FCA since it was already on the 2019 Referendum project list for renovations*

Beaufort Middle large parking lot could use some stormwater improvements as well as repaving due to damage of the large oak tress. (medium)



Mossy Oaks Parking lot, drive and sidewalks



2/23/2023

Beaufort County School District ©

25

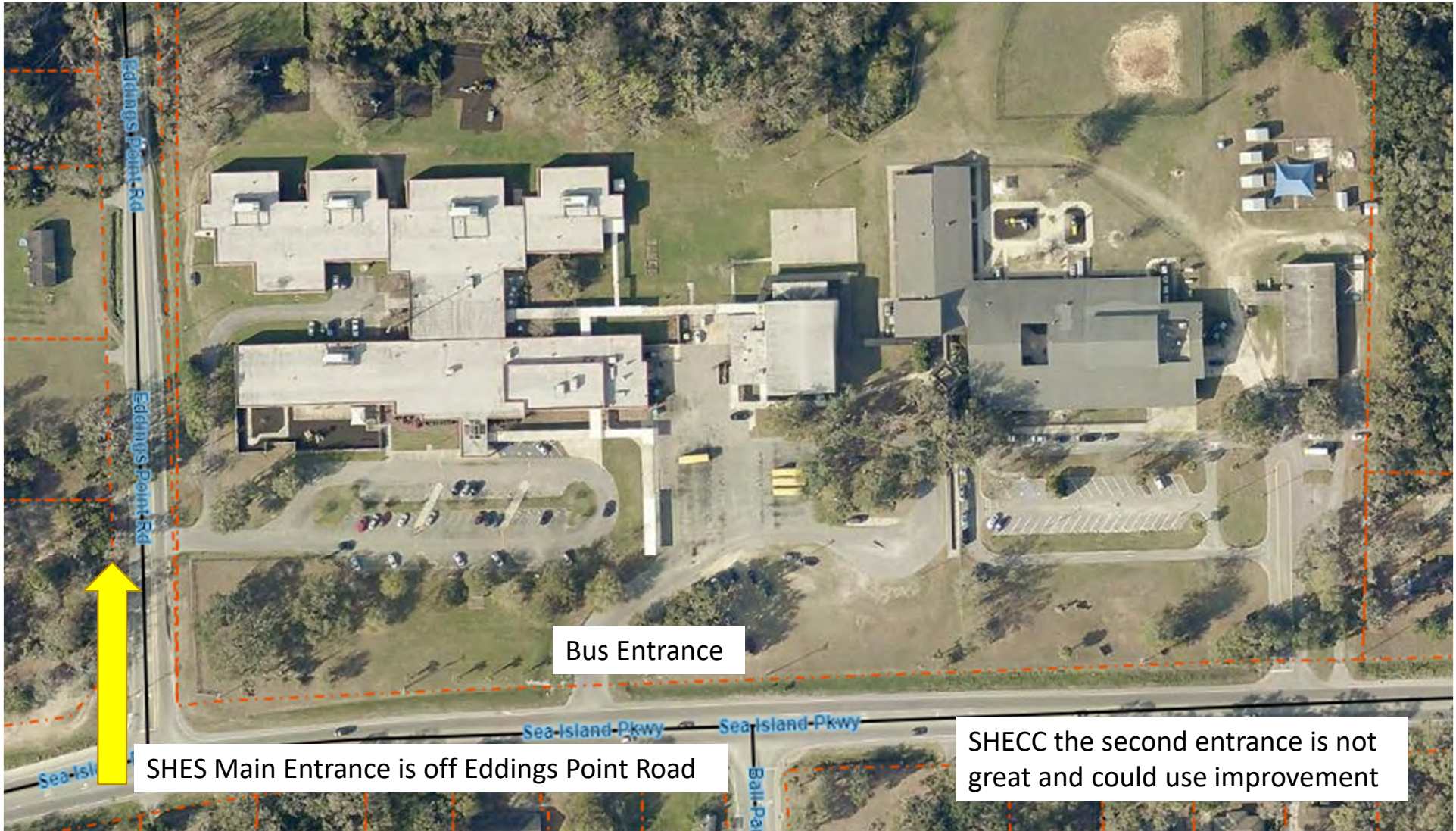
Wilborn Rd – to Hilton Head Middle School

Parking lot expansion at HHIMS front visitor area

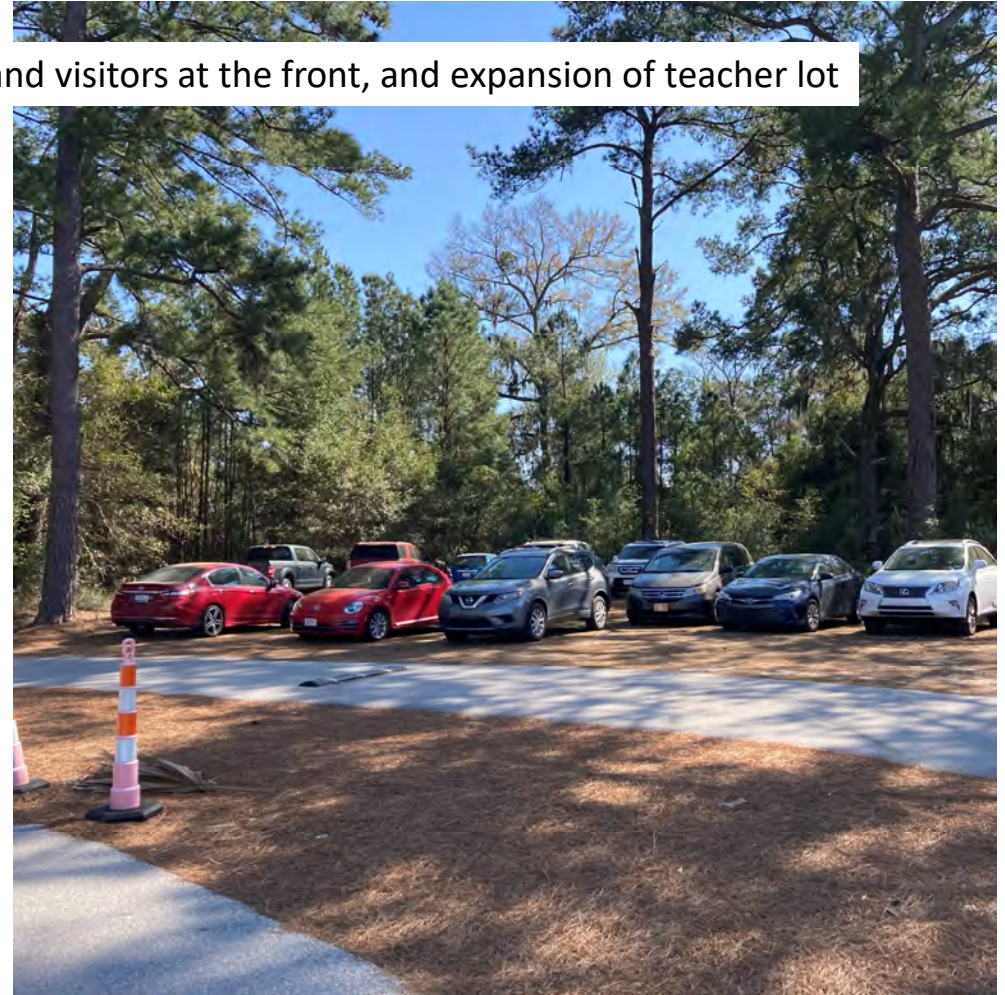
Road and parking at HHIHS would be part of the High School Rebuild project



2/23/2023



Riverview Charter needs additional parking for staff and visitors at the front, and expansion of teacher lot



2/23/2023

Beaufort County School District ©

28

## 4. Parking Lots

Parking lots rated “FAIR”  
condition in the 2022 Facilities  
Condition Assessment (FCA)

Total Sq. Ft. = 3,381,304

2/23/2023

Beaufort County School District

Row Labels	Count
Battery Creek High School	1
Beaufort High School	3
Beaufort Middle School	3
Bluffton ECC	2
Bluffton Elementary School	1
Broad River Elementary	4
Coosa Elementary School	3
District Educational Support Center	7
HE McCracken Middle School	5
Hilton Head Elementary, an authorized IB school	3
Hilton Head Island Early Childhood Center	2
Hilton Head Island School for Creative Arts	2
James J. Davis Early Childhood Center	3
King St - District Office	1
Lady's Island Elementary School	4
Lady's Island Middle School	4
MC Riley ECC	2
MC Riley Elementary School	5
Mossy Oaks Elementary School	3
Port Royal Elementary School	1
Riverview Charter School	2
Shanklin Elementary	2
St Helena ECC	1
St Helena ES	2
Whale Branch Elementary School	2
Whale Branch Middle School	2
<b>Grand Total</b>	<b>70</b>



## 5. Additional Athletics

### Middle School Athletic Improvements

- Turf fields for football
- Lights on football and baseball/softball fields
- Improvements to baseball/softball fields and dugouts

### High School Athletic Improvements:

- Press box at Beaufort HS and May River HS
- Weight room at Bluffton High



## 5. Additional Athletics

- HE McCracken
  - bathrooms and ticketing booth at football
  - Baseball/softball practice infield
- Whale Branch MS
  - Baseball/softball complete grading, irrigation, root removal, and sod
- Riverview
  - New Baseball/softball field with lights, fencing and dugouts
  - Soccer/ multipurpose field with lights and irrigation
- Hilton Head MS
  - Multipurpose field with bleacher pads

## 6. Stadium Expansions



Many of the stadiums in Beaufort County do not currently meet the seat count requirement to hold 1<sup>st</sup> and 2<sup>nd</sup> round athletic playoff contests. Only Battery Creek High School and Whale Branch Early College High School have the capacity to hold 3<sup>rd</sup> round and semi-final contest for their classifications. Current stadium capacities with their required capacities based on their current classification by the South Carolina High School league are below:

<u>School</u>	<u>Stadium Capacity</u>	<u>Class</u>	<u>1st &amp; 2nd Requirement</u>	<u>3rd &amp; Semi Requirement</u>
Battery Creek High School	5,000	3A	3,000	4,500
Beaufort High School*	2,500	3A	3,000	4,500
Bluffton High School	3,500	4A	4,000	5,000
Hilton Head High School	4,000	4A	4,000	5,000
May River High School	3,000	4A	4,000	5,000
Whale Branch Early College High School	4,000	1A	1,000	1,500

*\*Note Beaufort High School was 4A for the 2021-2022 school year. Beaufort High School will be 3A for the 2022-2023 school year.*

## 7. Furniture

Functional Flexibility is a concept in companies where employees can work in different functions or can be deployed purposely to various functions with different roles and responsibilities. Employees are multi-skilled to perform a variety of tasks.

This concept can apply to furniture as well – adaptive to various functions in a classroom to accommodate different roles and responsibilities of learning environments.



2/23/2023

<https://drive.google.com/file/d/18aDQSUwh1KxvE2QbLcFTFPISHGqSkSDM/view?usp=sharing>



Examples of older furniture circa 1990s

2/23/2023

Beaufort County School District ©

34



Examples of recent furniture replacements



---

How often should furniture  
be replaced in a classroom?

Or an office?



## 7. Furniture

Our average spending over the past 5 years puts us on an approximate 64-year life cycle for furniture replacement

-	Per Year Spending Level	
10-Year life cycle	\$	4,465,240.00
15-Year life cycle	\$	2,976,826.67
20-year life cycle	\$	2,232,620.00
30-year life cycle	\$	1,488,413.33
50-year life cycle	\$	893,048.00
100-year life cycle	\$	446,524.00
64-year life cycle	\$	694,130.43

## 8. Electric Vehicle Charging Stations

### Electric Vehicle Charging Stations:

- Level 2 charging stations for employees at the school district. These are more common and operate on 240v to 208v single phase power. These units can put around 30 miles per hour of charge on a car. The units do take a dedicated breaker per unit. Most companies do Level 2 for employee/workplace charging.
- Level 3 chargers take 480v three phase power and are considered high speed charging but also come with a much higher installation price.
- Dominion SC does not have incentives to help offset costs for installing charging stations. (we asked!!)

Electric School buses can be charged on Level 2 or Level 3 chargers





## 9. CPRC 2.0 Calendar

- ☑ Meeting 1 – November 29 @ 6:00 pm
- ☑ Meeting 2 – December 12 @ 6:15 pm
- ☑ Meeting 3 – January 5 @ 6:15 pm
- ☑ Meeting 4 – January 12 @ 6:15 pm
- ☑ Preliminary Report to Board - January 17
- ☑ Meeting 5 – January 23<sup>rd</sup> @ 6:15 pm
- ☑ Meeting 6 – February 6 @ 6:15 pm
- ☑ Meeting 7 – February 23 @ 6:15 pm
- Meeting 8 – March 6 @ 6:15 pm
- Report to the Board/Superintendent on progress of work – March 7 Board Meeting
- Meeting 9 – March 23 @ 6:15 pm
- Meeting 10 – April 3 @ 6:15 pm
- Final Report to the Board – April 4, 2023



# Questions and Follow-up Items

Further questions please contact:

- Aliyah Jackson, Exec. Admin      office 843-322-0715  
[Aliyah.Jackson@beaufort.k12.sc.us](mailto:Aliyah.Jackson@beaufort.k12.sc.us)
- Carol Crutchfield      office 843-322-0716    mobile 843-441-9749  
[Carol.Crutchfield@beaufort.k12.sc.us](mailto:Carol.Crutchfield@beaufort.k12.sc.us)
- Freddie Lawton      office 843-379-7815    mobile 843-441-5018  
[Freddie.Lawton@beaufort.k12.sc.us](mailto:Freddie.Lawton@beaufort.k12.sc.us)

THANK YOU FOR YOUR  
TIME