



Community Project Review Committee CPRC 2.0 Meeting 6

February 6, 2023

Welcome – Carol Crutchfield

Where Learning Leads the Way!

Agenda – Meeting 6



1. Introductions of Members
2. CPRC 2.0 Scope of Work
3. Town of Bluffton – Growth Management – Kevin Icard, Director
4. Additional Seat Capacity – need for new schools
 - Elementary
 - Middle
 - High
5. Other needs at May River High School
 - Cafeteria & Kitchen
 - Parking lot
6. Weight Room at Bluffton High School
7. Land for Future School
8. Review Calendar

1. Introductions



2/6/2023

Beaufort County School District ©

3

2. Scope of Work



The CPRC 2.0 is tasked with developing a list of projects to present to the Board of Education for a 2023 Bond Referendum



3. Town of Bluffton



Kevin Icard

Director of Growth
Management

[Email Kevin Icard](#)

Phone: 843-706-4529

[More Information](#)

GROWTH MANAGEMENT

Duties

The Growth Management Department is comprised of three divisions including the Planning and Community Development Office, Building Safety Office and the Customer Service Center. Through these divisions, the Growth Management Department provides the following services:

- Administering the following types of policies, programs and regulations to ensure the sound management of Bluffton's growth while protecting the quality of life and economic vitality:
 - Community Development
 - Development
 - Historic Preservation
 - Transportation
 - Zoning
- Enforcing adopted building codes and technical standards to protect the health and safety of the community
- Providing professional, friendly and efficient customer service to meet the needs and expectations of the Bluffton community

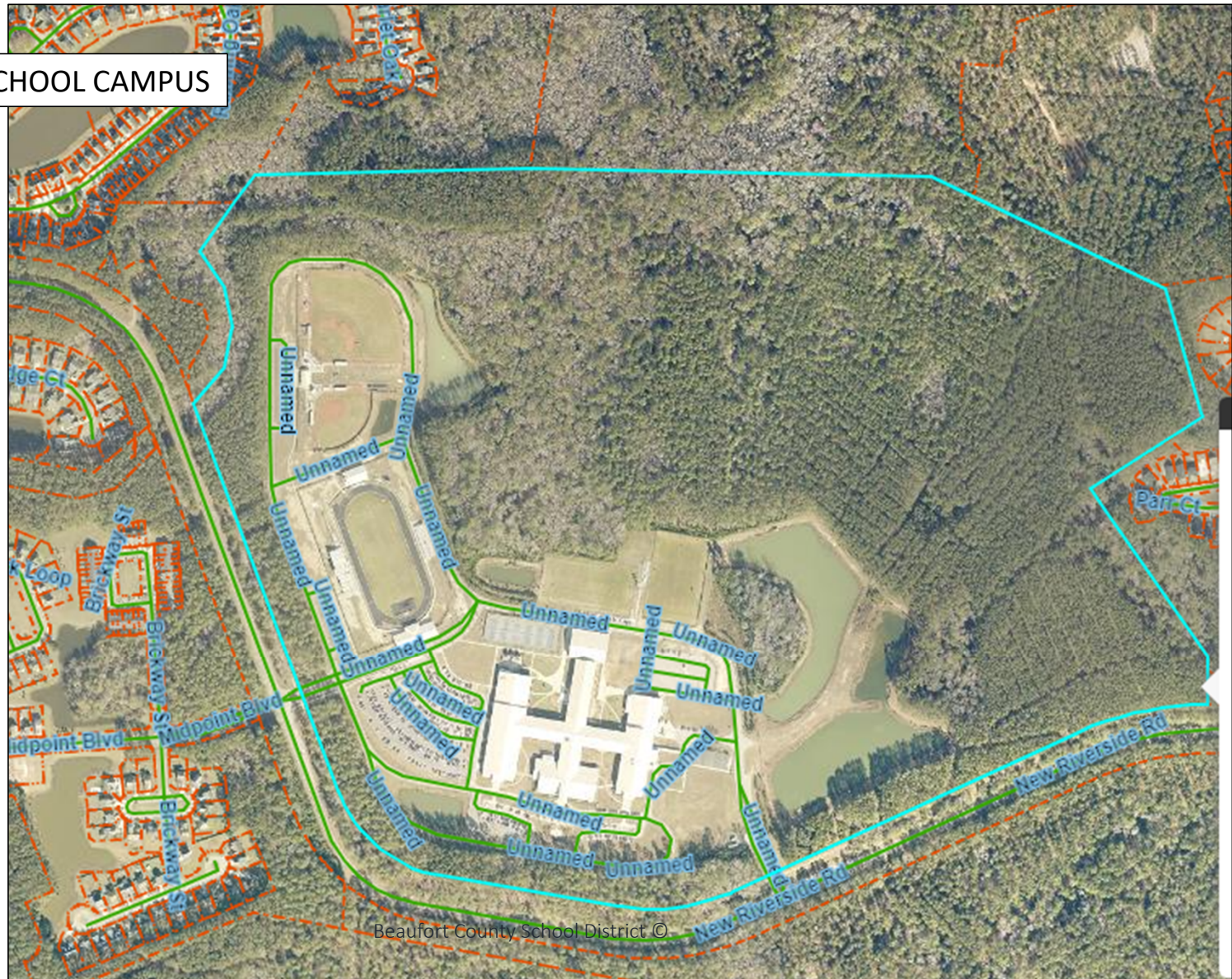


4. Land for a future school in Bluffton

They don't make more land!

- We have available land at the May River Campus for an elementary and middle school with total capacity being 1800 additional students
- We currently have a land consultant working on identifying available parcels for purchase that are suitable for building schools beyond our immediate need
- We have been unable to move forward with any purchase of identified property

MAY RIVER HIGH SCHOOL CAMPUS



2/6/2023

Beaufort County School District ©

PUD % Residential Build-out

Jones Estate – 77%

New Riverside – 71%

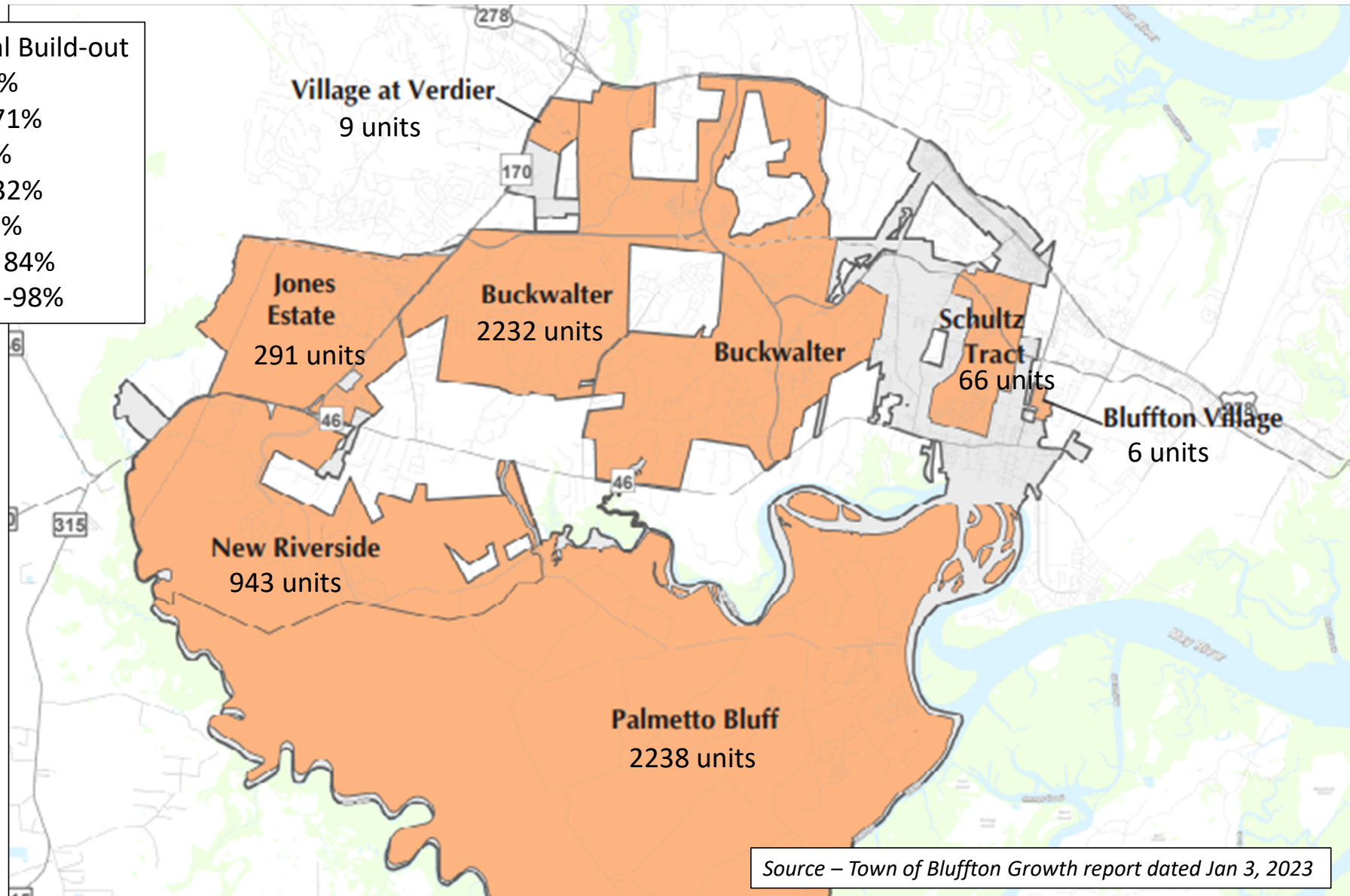
Buckwalter – 74 %

Palmetto Bluff – 32%

Schultz Tract – 95%

Bluffton Village – 84%

Village at Verdier -98%



2/6/2023

Source – Town of Bluffton Growth report dated Jan 3, 2023

2021

Okatie ES

2022

Okatie ES

Between Malind Bluff and River Oaks there are over 700 Residential units approved

5. Additional Seat Capacity



Is Bluffton Growing?

<u>School</u>	<u>Grades</u>	<u>Attend at 45-day 2022-2023</u>	<u>Building Capacity - NO mobiles</u>	<u>% BUILDING Capacity Usage</u>	<u>2022 Program Capacity</u>	<u>% PROGRAM Capacity Usage</u>
Bluffton ES	PK-5	699	946	74%	872	80%
MC Riley Elementary	PK-5	772	929	83%	884	87%
Okatie ES	PK-5	612	672	91%	752	81%
Pritchardville ES	PK-5	1005	800	126%	626	161%
Red Cedar ES	PK-5	601	764	79%	844	71%
River Ridge Academy	PK-8	1121	1333	84%	1280	88%
Bluffton MS	6-8	872	1035	84%	855	102%
HE McCracken MS	6-8	890	909	98%	1049	85%
Bluffton High	9-12	1350	1434	94%	1097	123%
May River HS	9-12	1602	1751	91%	1506	106%

2/6/2023

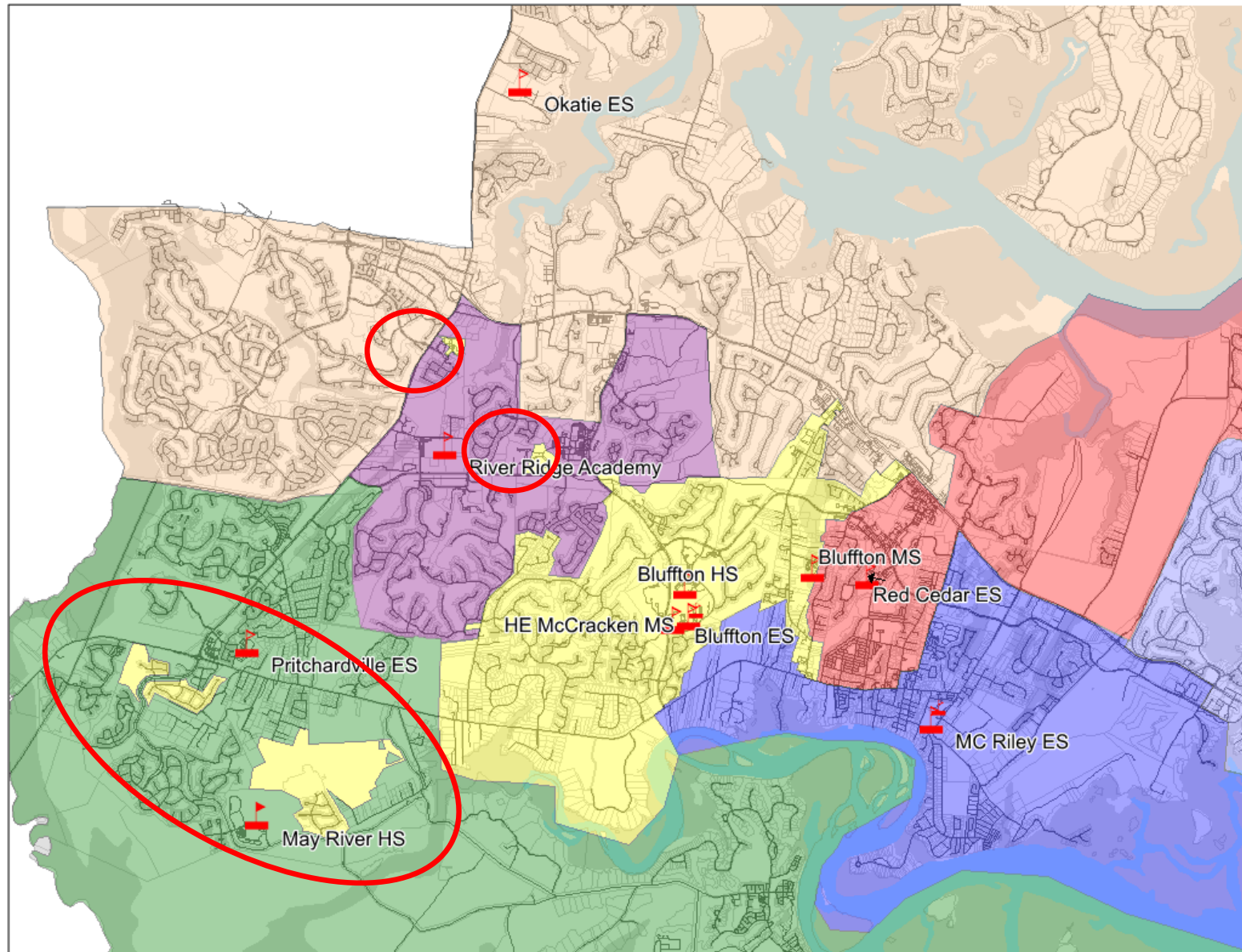


5. Additional Seat Capacity

Projections of Resident Students

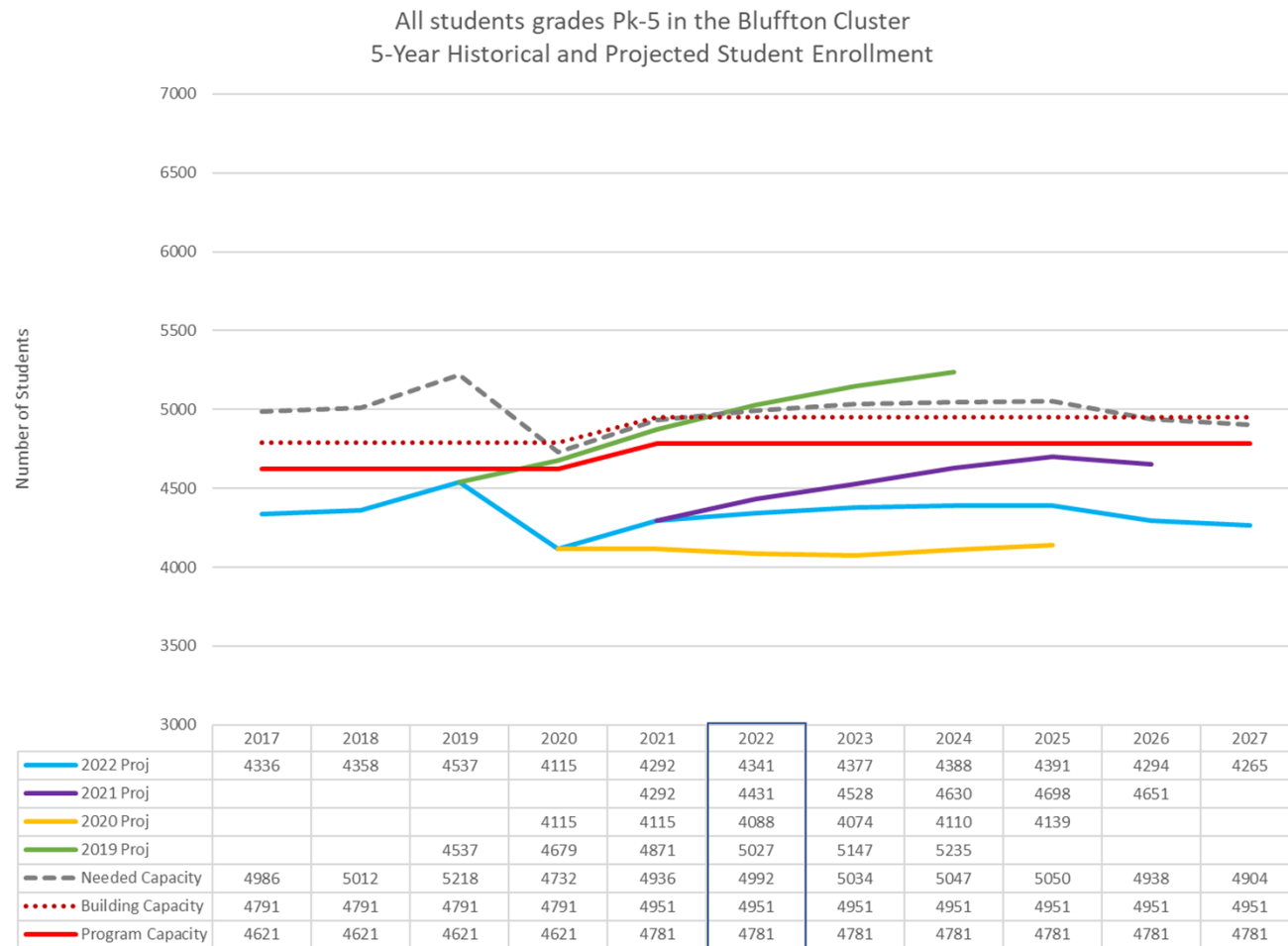
- Examines birth data for the county for last 10 years
- Map 5 years of student data at the 45th day
- Cohort survival rates are calculated for each neighborhood planning unit (NPU) and school zone by grade level.
- Model then calculates a projection for 5 years using a weighted average – putting most recent trend as more important than previous years.
- Adjustments then made for transfers in/out of the school to account for Choice options including program choice, hardships, special education, employee courtesy, etc.

Attendance Zones changes made to address growth in the Jones Estate and New Riverside areas of Bluffton – shown as outlier pieces in yellow



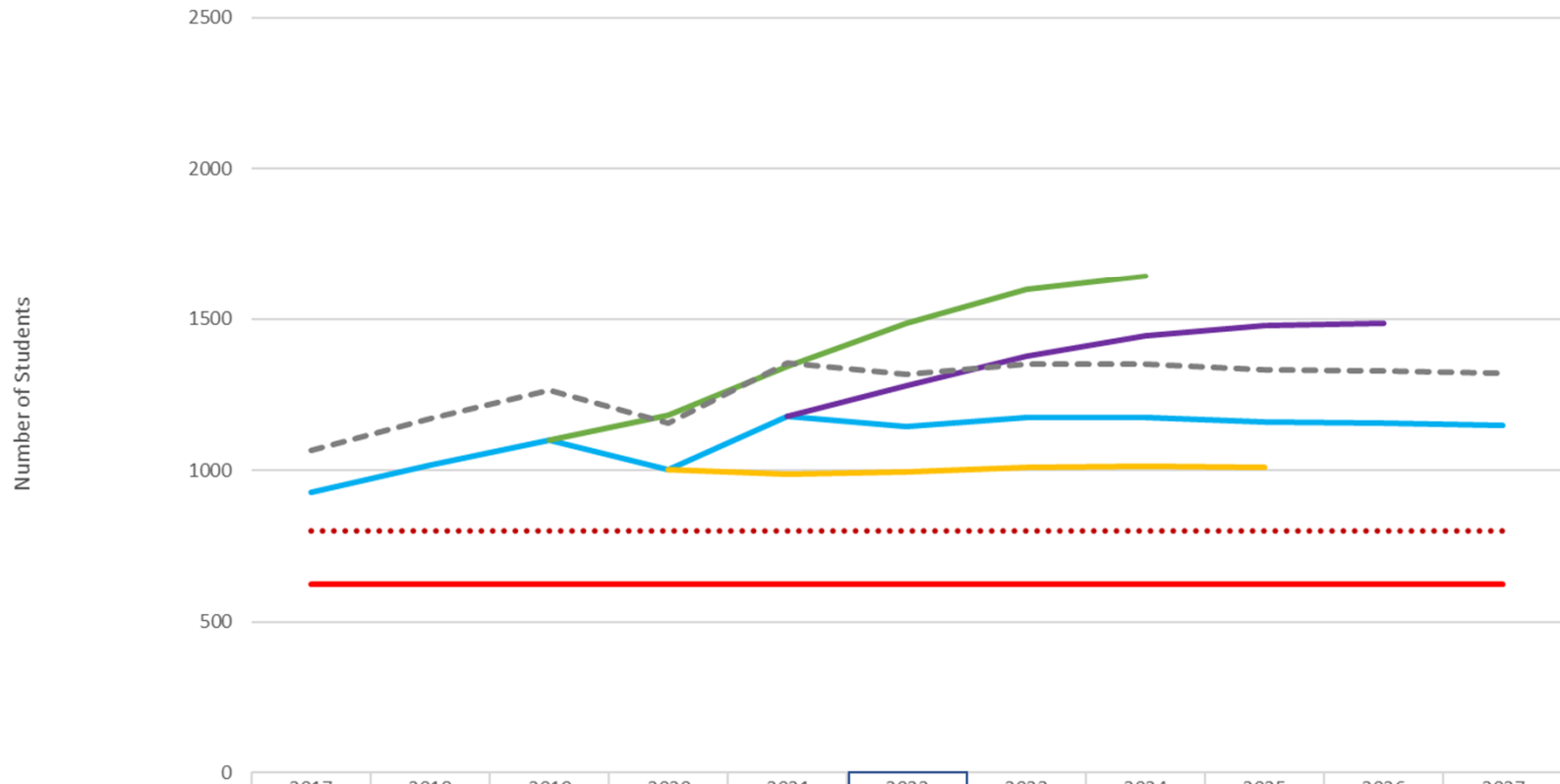
2/6/2023

5. Additional Capacity – Elementary level



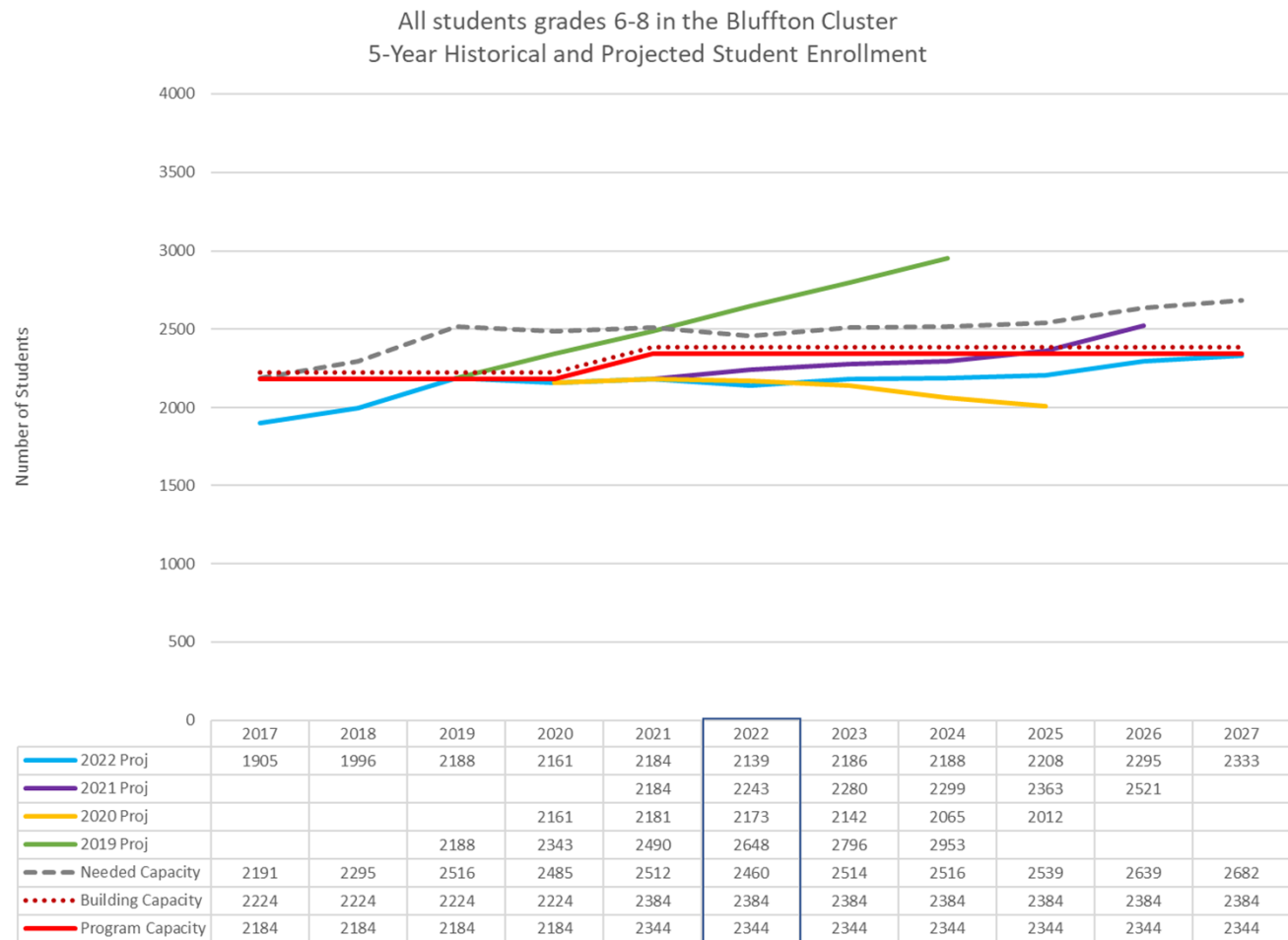
2/6/2023

PRITCHARDVILLE ELEMENTARY SCHOOL 5-Year Historical and Projected Student Enrollment



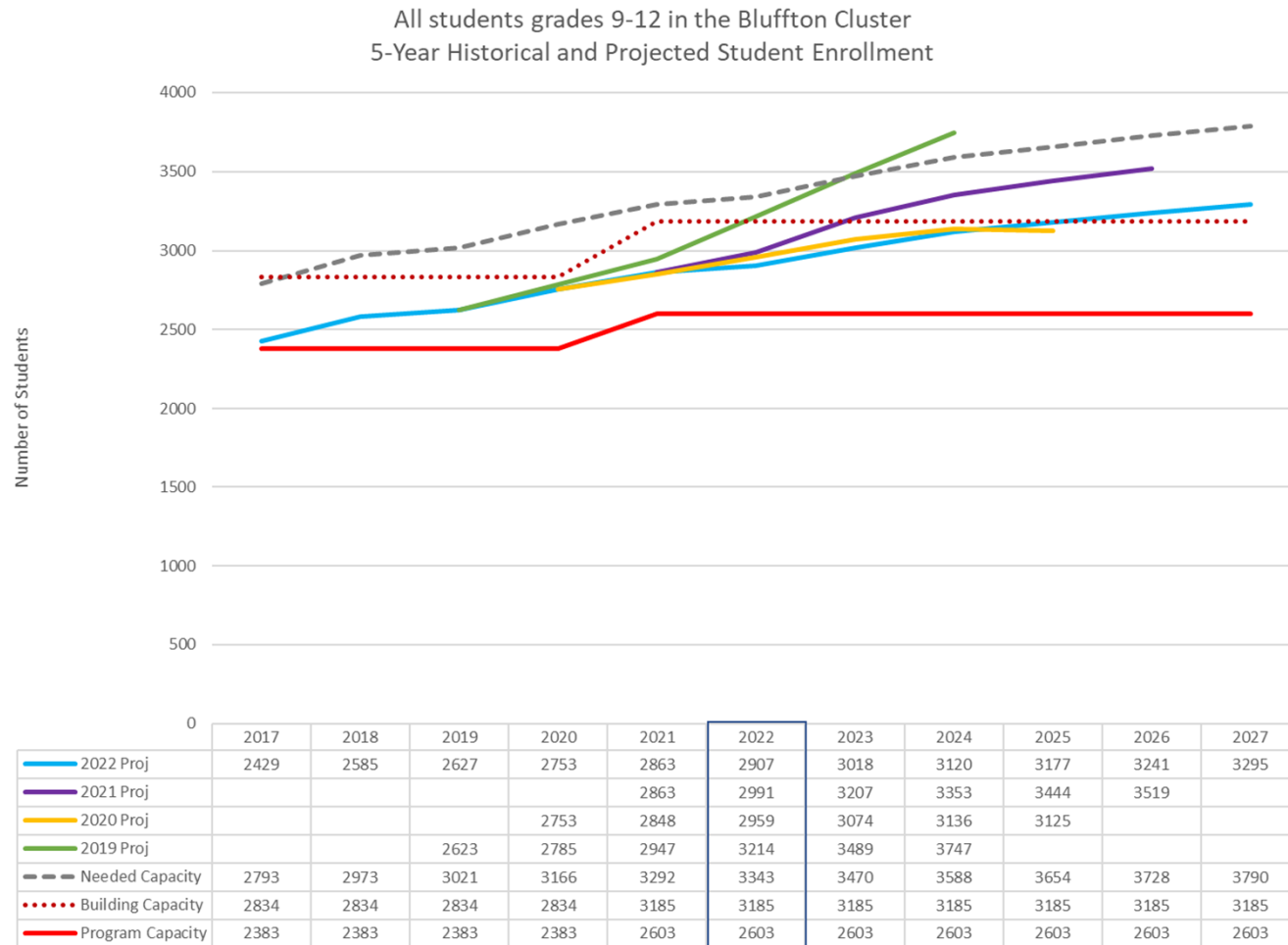
2/7/2023

5. Additional Capacity – Middle level



2/6/2023

5. Additional Capacity – High level



2/6/2023



5. Additional Capacity

In our Facilities Master Plan from 2022 and the 2023 just released we have identified these needs:

- Elementary Seat Capacity in Bluffton
- Middle Seat Capacity in Bluffton
- High Seat Capacity in Bluffton

At the, Board of Education work session on January 27, 2023, the Board passed a motion to approve the design work for a new elementary school in Bluffton

This will be discussed at the February 7, 2023, Board meeting to finalize the funding source.



6. Other needs at May River High - Cafeteria

- Cafeteria was for about 350-375 students at a time – 4 serving lines = 5 lunch periods
- Students spill out into the hallways for lunch – where extra convertible bench tables were added
- Students also take advantage of outdoor table opportunities (weather dependent)





6. Other needs at May River High – Parking lot

- Town of Bluffton local ordinance for parking required additional parking upon the design of the 22-classroom addition because student capacity would be increased to close to 1800 students
- Funds were not included as part of the classroom addition to complete additional parking



7. Weight room at Bluffton High School

- Original weight room designed for Bluffton High is 1355 sq. ft.
- Current weight room at Bluffton High uses 2 rooms that were originally designed as PE/Health classrooms for a total of 1888 sq. ft.
- School secured donated funds to add the additional equipment to create this bigger space
- New standard for Beaufort County Athletics for a school of this size is 3000 sq. ft. based on latest renovations at Battery Creek and Beaufort High Schools
- Building a new weight room would allow these other spaces to be reverted to 3 classrooms

8. CPRC 2.0 Calendar



- ☑ Meeting 1 – November 29 @ 6:00 pm
- ☑ Meeting 2 – December 12 @ 6:15 pm
- ☑ Meeting 3 – January 5 @ 6:15 pm
- ☑ Meeting 4 – January 12 @ 6:15 pm
- ☑ Preliminary Report to Board - January 17
- ☑ Meeting 5 – January 23rd @ 6:15 pm
- ☑ Meeting 6 – February 6 @ 6:15 pm
 - Meeting 7 – February 23 @ 6:15 pm
 - Report to the Board/Superintendent on progress of work – February 21st Board Meeting
 - Meeting 8 – March 6 @ 6:15 pm
 - Meeting 9 – March 23 @ 6:15 pm
 - Meeting 10 – April 3 @ 6:15 pm
 - Final Report to the Board – April 4, 2023

Project Topics & Tasks	Completed	6-Feb	23-Feb	6-Mar	23-Mar	3-Apr
Mobile Classrooms				X		
Additional Early Learning Classrooms	X					
Elementary School level seat capacity in Bluffton		X				
Middle School level seat capacity in Bluffton		X				
High School level seat capacity in Bluffton		X				
Additional cafeteria and kitchen space at May River High School		X				
Stadium expansions at multiple high schools			X			
Weight room at Bluffton High School		X				
Land for Future School		X				
Replacement School for Lady's Island Middle School	X					
Career and Technology Education (CTE) facilities at May River High School, Bluffton High School and Beaufort High School				X		
JROTC Facility at May River High School				X		
Renovation/Replacement school for Hilton Head Island High	X					
Parking lots and entrance drives updates			X			
Additional parking lot at May River High School		X				
Riverview Charter School Gym			X			
Technology warehouse and imaging center				X		
Early Childhood Office/Screening Spaces	X			X		
Transportation Shop				X		
Improved Bus Storage lots				X		
Kitchen Improvements at multiple schools			X			
District Education Support Center (DESC) catering kitchen and Right Choices kitchen				X		
Electric Vehicle (EV) Charging Stations at Schools			X			
Furniture			X			
Additional Athletics			X			
Safety/ Security				X		
School Moderniation				X		
finance - funding of referendum					X	
final prioritization					X	
draft a report						X

2/6/2023



Questions and Follow-up Items

Further questions please contact:

- Aliyah Jackson, Exec. Admin office 843-322-0715
Aliyah.Jackson@beaufort.k12.sc.us
- Carol Crutchfield office 843-322-0716 mobile 843-441-9749
Carol.Crutchfield@beaufort.k12.sc.us
- Freddie Lawton office 843-379-7815 mobile 843-441-5018
Freddie.Lawton@beaufort.k12.sc.us



THANK YOU FOR YOUR
TIME